



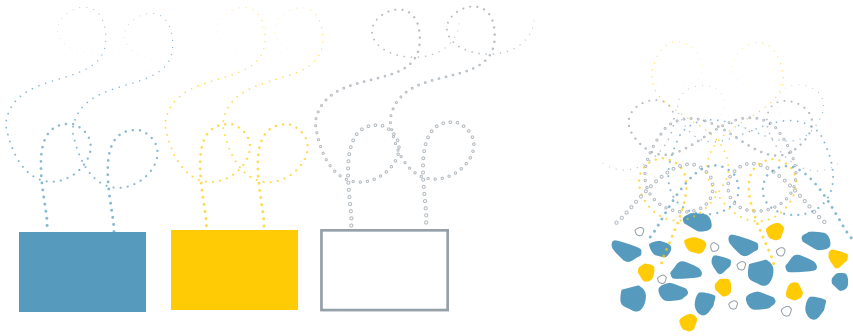
The new BG-Sweetscent with improved emission profile

The new BG-Sweetscent comes as a pad filled with the three volatile components in granular form.

For the same price as the old one, the new BG-Sweetscent offers the following improvements:

- **A more natural emission pattern** – the spatial distribution of the cocktail of active molecules is more equally mixed and resembles the natural emission of human skin odours.
- **Better protection against environmental influence** – the waterproof envelope allows a diffusion of the components through the membrane. At the same time the components are protected against rain, humidity and light.
- **Improved emission profile** – the ingredients are formulated into specific polymers that provide a controlled release of the active ingredients.

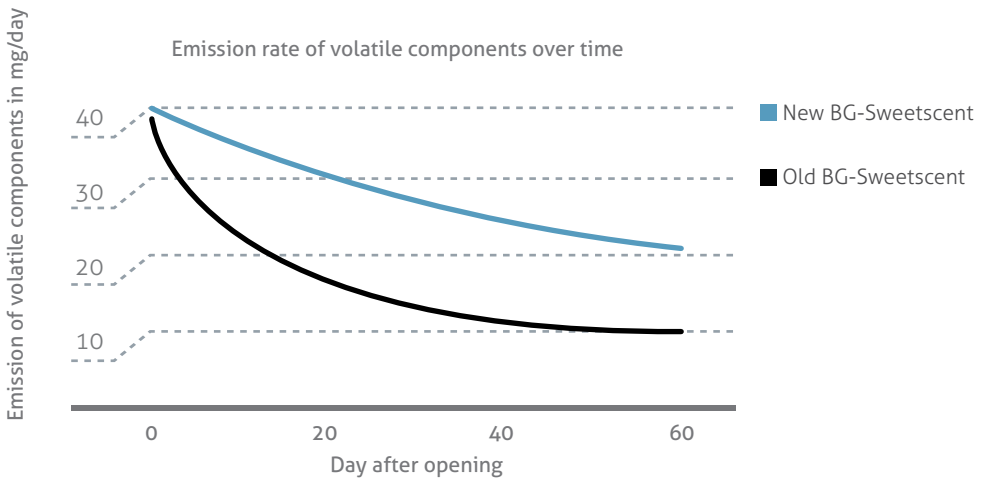
A more natural emission pattern



Old BG-Sweetscent with the components separated from each other.

New BG-Sweetscent with polymere particles that provide a more uniform mixture of the volatile blend.

Improved emission profile



Proven efficacy of the BG - Sweetscent

The effect of the BG-Sweetscent on the catch rate of traps was measured.

Traps with CO₂ + BG-Sweetscent caught significantly more mosquitoes than traps with only CO₂ as shown below:

Caught *Aedes albopictus* mosquitoes in traps with and without BG-Sweetscent

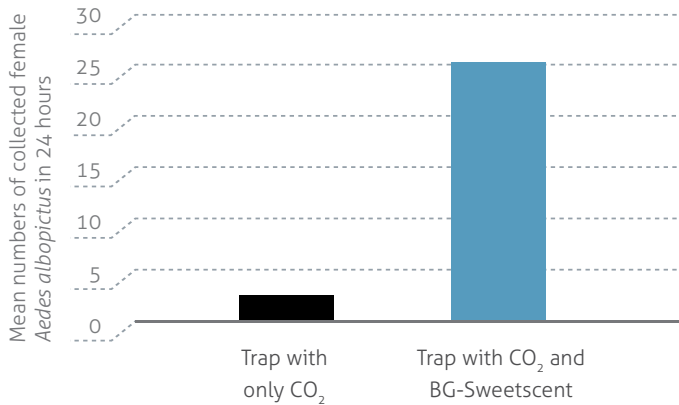


Figure 1

Caught *Culex quinquefasciatus* mosquitoes in traps with and without BG-Sweetscent

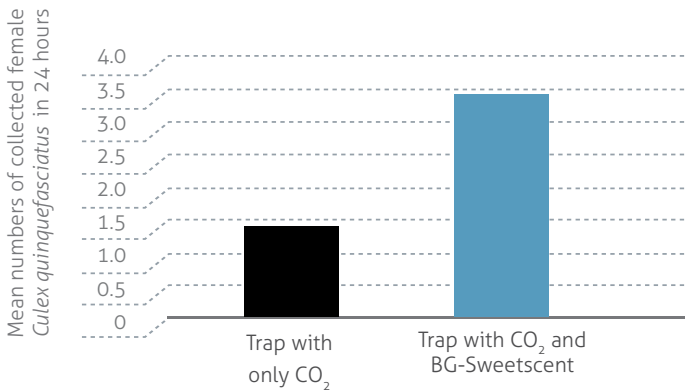


Figure 2

Mean numbers of collected female tiger mosquitoes (*Aedes albopictus*) (Figure 1) and female southern house mosquitoes (*Culex quinquefasciatus*) (Figure 2) in 24 hours in traps with only CO₂ compared to traps with CO₂ + BG-Sweetscent.

Handling of the new BG - Sweetscent

1. Remove the BG-Sweetscent from the plastic package [F1].



F1

2. Place the BG-Sweetscent [F2] (do not open it) into the inside of the suction tube of the Biogents mosquito trap between catch bag and fan [F3].



F2



F3